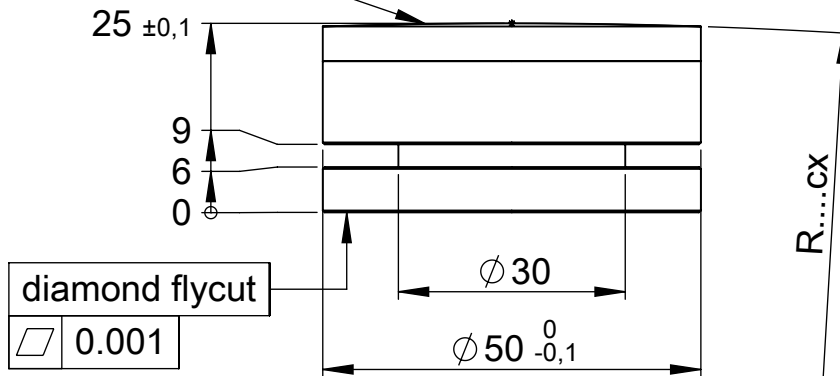
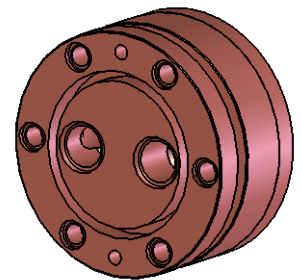


mirror surface
diamond flycut



roughness: Ra < 5nm
form accuracy: < 0,3µm



drawing number	item	coating	radius
1.3.044.00.000 Pos.01	13830	uncoated	750cx±2%
1.3.044.00.000 Pos.02	54692	uncoated	1100cx±2%
1.3.044.00.000 Pos.03	28505	uncoated	2915cx±2%
1.3.044.00.000 Pos.04	15314	uncoated	1027cx±5mm
1.3.044.00.000 Pos.05	13294	uncoated	1400cx±5mm
1.3.044.00.000 Pos.06	28291	uncoated	1550±5mm

				TOLERANCES UNL. STATED ISO 2768 mH	
1	140/07 In: Artikelnummer ausgetauscht			24.04.13	BK
ISS.	MODIFY			DATE	NAME
	SURFACE:	MATERIAL: OFHC-Cu	DRAWN	02.11.04	am
			CHECKED	27.04.13	RE
SEMI-FINISHED PRODUCT:			PROTECTION REFERENCE TO DIN 34 OBSERVE		
SCALE: 1:1	DESCRIPTION: spherical mirror ø50x25 parallel cooling / M5			ITEM:	A4
ORIG.:				REPL.F.:	REPL. BY:
				DRAWING NUMBER: 1.3.044.00.000.k.1	SHEET: 1
				OF: 1	