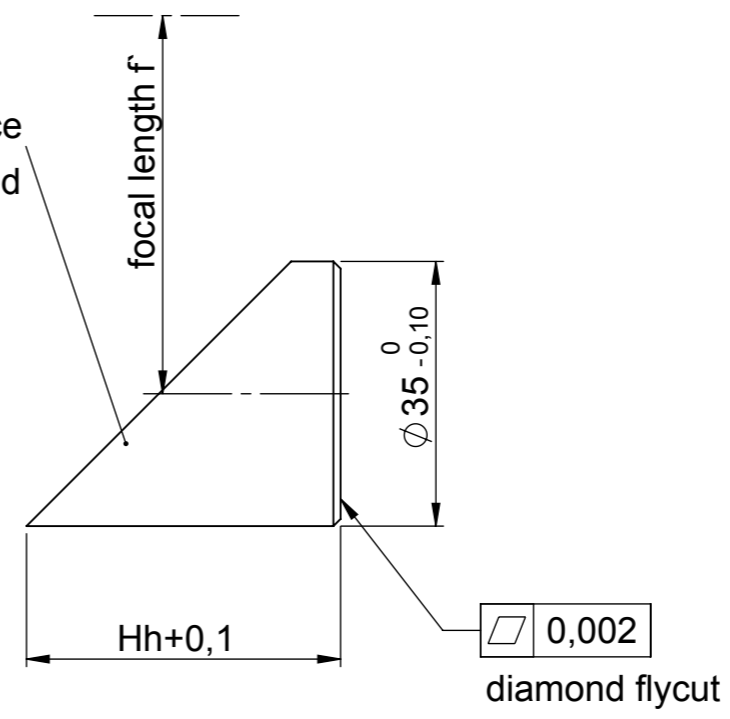
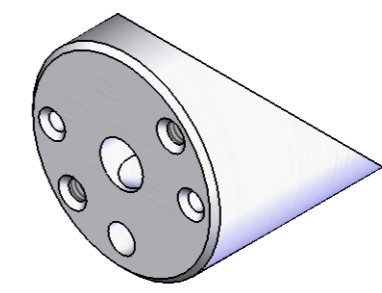


mirror surface  
diamond turned



1-5-048-00-000 Parabolic Mirror D35	item	coating	material	focal length f eff	spot	Hh+0,1
Pos01	17503	uncoated	OFHC-Cu	125		41,2250
Pos02	15135	Molybdenum	OFHC-Cu	125		41,2250
Pos03	16145	Molybdenum	OFHC-Cu	150		41,0208
Pos04	17429	uncoated	OFHC-Cu	200		40,7656
Pos05	13791	Molybdenum	OFHC-Cu	200		40,7656
Pos06	15744	Molybdenum	OFHC-Cu	250		40,6125
Pos07	20209	Molybdenum	OFHC-Cu	300		40,5104
Pos08	38518	Hardgold	OFHC-Cu	300	0,6x0,6	40,5104
Pos09	35971	Molybdenum	OFHC-Cu	300	0,6x0,6	40,5104
Pos10	38872	uncoated	OFHC-Cu	200	2x2	40,7656
Pos11	38943	Hardgold	OFHC-Cu	200		40,7656
Pos12	40050	Molybdenum	OFHC-Cu	110		41,3920
Pos13	37823	uncoated	OFHC-Cu	150		41,0208
Pos14	50919	Hardgold	OFHC-Cu	200	6x1.2	40,7656
Pos15	70298	uncoated	OFHC-Cu	250		40,6125



MANUFACTURE	
PROJECT:	
NO OF PIECES:	
DATE:	
NAME:	

1 Hinweis im Rohling hinzugefügt (1.12.14/gt)			08.05.15	GT	TOLERANCES UNL. STATED ISO 2768 mH
ISS.	MODIFY		DATE	NAME	
KUGLER		SURFACE:	MATERIAL: OFHC-Cu	DRAWN 13.07.06	PROTECTION REFERENCE TO DIN 34 OBSERVE
			SEMI-FINISHED PRODUCT: 12842	CHECKED 08.05.15	
SCALE:	DESCRIPTION:	ITEM:		A3	
1:1	Parabolspiegel D35 watercooling/Hm=22,5/bore scheme S	DRAWING NUMBER:		SHEET: 1	
ORIG.	REPL.F.	REPL.BY		1-5-048-00-000-k.1	
				OF: 1	